

GUEST SERVICES

ACCESSIBLE SERVICES – For a complete list of services, pick up a free Accessibility Guide, sponsored by Momentum Refresh, at any information booth.

APP – It's free and features the Fair Finder and daily schedule information. Find the Official MN State Fair App in the App Store and Google Play Store.

ATMS – Located throughout the fairgrounds and noted on State Fair maps with \$

CARE & ASSISTANCE – 8 a.m. to 10 p.m. (8 p.m. on Labor Day) Across from West End Market on West Dan Patch Avenue. Headquarters for people of any age who are lost or separated from their group. Nursing and infant care facilities, adult-size adjustable changing table, free ID wristbands and wheelchair battery charging are also available. For additional nursing and infant care facilities, visit an information booth.

CELL PHONE CHARGING – For a list of places to charge your cell phone, visit any information booth or mnstatefair.org.

COMMENTS AND SUGGESTIONS – Feedback is welcome in Guest Relations at Visitors Plaza or by emailing guestservices@mnstatefair.org.

DEALS, DRAWINGS & GIVEAWAYS – Sponsored by Human Touch. This free guide can be found at all information booths and lists discount days, best values, free stuff, bargains and prize drawings at the fair, including deals on food and beverages.



FIRST AID – Sponsored by Regions Hospital. For serious illness or injury emergencies, call 911.

- First Aid West: **8 a.m. to 11:30 p.m. (10:30 p.m. Labor Day)**, across from West End Market on West Dan Patch Avenue.
- First Aid East: **8 a.m. to 9 p.m. (8 p.m. on Labor Day)**, outside the north end of the 4-H Building on Cosgrove Street.

HAND WASH STATIONS – Located throughout the fairgrounds and noted on State Fair maps with 🧼

INFORMATION BOOTHS – Pick up informational brochures, maps, ID wristbands, get your questions answered and more. Check out a State Fair map for locations.

Blue Ribbon Bargain Book

Coupon books can be purchased at Bargain Book Carts and FairWear Gift Shops for \$5.



LOST & FOUND ITEMS – 8 a.m. to 11:30 p.m. (10 p.m. on Labor Day) Across from West End Market on West Dan Patch Avenue, 651-288-4555, lostandfound@mnstatefair.org.

POLICE – OPEN 24 HOURS Across from West End Market on West Dan Patch Avenue. Call 911 in case of emergency.

RE-ADMISSION TO THE FAIRGROUNDS – Request a hand stamp when leaving through any gate to be re-admitted the same day prior to 9 p.m. (7 p.m. on Labor Day) without additional charge.

REFUNDS – Tickets for Grandstand events, gate admission and attractions are non-refundable. Questions: Visit Guest Relations at Visitors Plaza.

SMOKING – For the comfort and safety of all, designated smoking areas are conveniently located throughout the fairgrounds. Smoking (including the use of e-cigarettes and vape pens) is permitted only in these areas, which are identified with 🚬 on State Fair maps available at any information booth. Marijuana smoking is prohibited throughout the fairgrounds.

WATER – Water bottle refill stations and drinking fountains are noted on State Fair maps with 💧

WEATHER – Severe weather shelters are located throughout the fairgrounds and noted on State Fair maps with ⚡

WHEELCHAIR, ELECTRIC SCOOTER, STROLLER & WAGON RENTALS – 7 a.m. to 11 p.m. (9 p.m. Labor Day) HomeTown Mobility rents from five locations. Equipment rented on-site is available on a first-come basis with no guarantee of availability. Noted on State Fair maps with ♿

WI-FI – Free Wi-Fi is located at the west Grandstand Plaza (powered by DragNFLy) and at the Xfinity exhibit at the entrance to FAN Central.

TRANSPORTATION

BUS PICK-UP & DROP-OFF: For more information on Park & Ride, Express Bus, Metro Transit and Metro Mobility drop-off and pick-up locations, stop by any information booth or mnstatefair.org.

RIDESHARE SERVICES DROP-OFF & PICK-UP:

- Gate #2 on Hoyt Avenue
- Lot south of Como Avenue, just west of Snelling Avenue

TAXIS: Available outside the Loop Gate #9 on Como Avenue

TROLLEYS: Sponsored by UnitedHealthcare. Two free trolleys (one of which is ADA-accessible) service the northeast area of the fairgrounds. A free ADA-accessible trolley also services Randall Avenue with stops at Buford Avenue and Gate #18 at Dan Elmer Way. Trolleys run 9 a.m. to 2 p.m. and 3 to 8 p.m. daily.



FRIDAY, AUG. 30



Daily Schedule

2024

Early Bird Specials until 1 p.m. at Mighty Midway & Kidway!

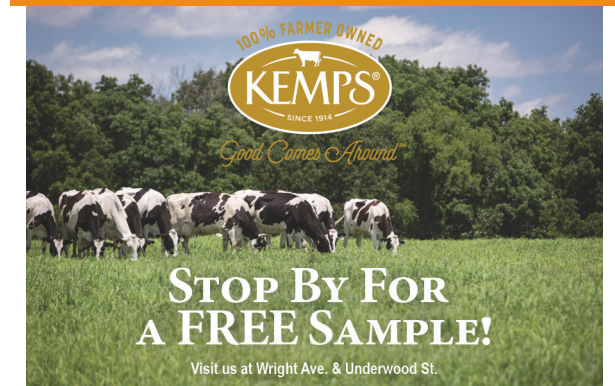
MINNESOTA STATE FAIR

HOURS OF OPERATION

	Aug. 22-Sept. 1	Labor Day
Bargain Book Carts	9 a.m.-5 p.m.	5 p.m.
Exhibit Buildings (most)	9 a.m.-9 p.m.	8 p.m.
Fairgrounds Hours	7 a.m.-11 p.m.	9 p.m.
– Fairgrounds Admission	7 a.m.-9 p.m.	7 p.m.
Food Building	8 a.m.-9 p.m.	8 p.m.
Guest Relations (Visitors Plaza)	7:30 a.m.-10:30 p.m.	9 p.m.
International Bazaar	9 a.m.-9 p.m.	8 p.m.
North End	9 a.m.-9 p.m.	8 p.m.
State FairWear Gift Shops	9 a.m.-9 p.m.	8 p.m.
West End Market	9 a.m.-9 p.m.	8 p.m.

See inside for more barn, building and exhibit hours.

All information is subject to change.



BANDSHELL TONIGHT! *Leinenkugel's BEER*



MOON TAXI
8:30 p.m.

WEST END AT SUNSET *Schell's BEER*



FIRST AVENUE GOES TO THE FAIR
8 p.m.

BAZAAR AFTER DARK *SUMMIT BEER CO.*



INTERNATIONAL REGGAE ALL STARS
8 p.m.

GRANDSTAND

2024 CONCERT SERIES
sponsored by sleep number.

MATCHBOX TWENTY
with special guest Beauty School Dropout



7 P.M.

CHECK TICKET AVAILABILITY AT GRANDSTAND TICKET BOOTH

The Grandstand Ticket Booth is located near the east end of the Grandstand (noon to 8 p.m.), or get tickets at mnstatefair.org (subject to availability). Grandstand gates open approximately 60 minutes prior to show.



Nightly Fireworks Spectacular follows Grandstand show (weather permitting) sponsored by *mazda*

THE LEINIE LODGE BANDSHELL *Leinenkugel's BEER*

- Flag Raising10:25 a.m.
- Thomasina Petrus & The King's Quartet 10:30, 11:45 a.m.
- Jonny Lyons & the Pride 1, 2:30 p.m.
- Lucas Hoge..... 3:45, 4:45 p.m.
- Amateur Talent Contest Semifinals..... 6 p.m.

FAMILY FAIR STAGE at BALDWIN PARK *Green Mill BEER*

- Kidsdance 10:30, 11:30 a.m.
- Alléz-OOPS! Circus.....12:30, 3:30 p.m.*
- Comedy. Spectacle.....12:30, 3:30 p.m.*
- Monster Shop Bump'n1:30, 4:30, 6 p.m.
- Minnesota State Fair County Fair Talent Contest Semifinals.....7 p.m.

SCHELL'S STAGE at SCHILLING AMPHITHEATER *Schell's BEER*

- MNHS presents History On-A-Schtick10, 11 a.m.
- Jiggs Lee Invasion 12:30, 1:30, 2:30 p.m.
- Gregg Hall & The Wrecking Ball 4, 5, 6 p.m.

INTERNATIONAL BAZAAR STAGE *SUMMIT BEER CO.*

- Kickin' It Irish with O'Shea Irish Dance..... 10:45 a.m., noon, 1:15 p.m.
- Dia Toti..... 3:15, 4:15, 5:45 p.m.

THE NORTH WOODS *Good Health Saunas*

- All-Star Stunt Dogs Splash..... 11 a.m., 2*, 4:30 p.m.
- Timberworks Lumberjack Show noon, 3, 5:30, 7 p.m.

BE A STATE FAIR STAR *Treasure Island RESORT & CASINO*

Mia Dorr's Karaoke in The Gardennoon – 8:45 p.m.

HISTORY SNAPSHOTS

A quick glimpse into State Fair history presented by Minnesota State Fair Foundation volunteers in front of Ramberg Center
Daily10:30 a.m.,* 12:30, 4:30, 6:30 p.m.

PARADE 2 p.m.*

Marching bands: Champlin Park, Jordan, Robbinsdale Cooper, MSU Maverick Machine Marching Band (ASL interpretation in front of Admin Bldg.)

4-H BUILDING 9 a.m.-9 p.m.

For all 4-H activities, download the "Minnesota 4-H" app.

HARKNESS HALL STAGE (first floor)

4-H Project Talks	10 a.m., 5:30 p.m.
4-H State Arts-In Musical Performance	11:30 a.m., 5, 7:30 p.m.
4-H Fashion Revue	4 p.m.

ERICKSON STAGE (second floor)

4-H Share the Fun Showcase	6:30 p.m.
----------------------------	-----------

AGRICULTURE HORTICULTURE BLDG. 9 a.m.-9 p.m.

Crop art* & scarecrow displays; ribbon-winning fruits & vegetables, including the giant pumpkin contest; garden kaleidoscopes; floral display in the rotunda; FFA crops & agriculture technology; and much more!



Ask the Apple Grower	10 a.m.-4 p.m.
Ask the Cider Maker	10 a.m.-4 p.m.
Ask the Grape Grower	10 a.m.-6 p.m.
Minnesota Bonsai Society	noon-9 p.m.
Orchid Society of Minnesota	noon-9 p.m.

BEE & HONEY EXHIBIT

Ask a Beekeeper	9 a.m.-9 p.m.
Beeswax Candle Making	10, 11 a.m.
Looking Inside the Hive	10:30 a.m., 12:30, 2:30, 4:30*, 6:30 p.m.
Harvesting Honey	1, 2, 4, 5 p.m.

THE COMMON TABLE: MINNESOTA EATS 9 a.m.-9 p.m.

Interactive and educational exhibits on food sustainability

Spark-Y: Aquaponics Demonstration	9 a.m.-9 p.m.
-----------------------------------	---------------

THE DIRT DEMONSTRATION STAGE

How to Grow Giant Pumpkins	10 a.m., 4 p.m.
Growing Tomatoes Outside	11 a.m.
How to Repair Wounds & Prevent Damages to Shrubs & Trees	noon
Hydroponics, The Very Easy Way	1 p.m.
Totally Tomatoes	2 p.m.
Backyard Composting	3 p.m.
Water Mission	5 p.m.

MINNESOTA CRAFT BREWERS GUILD 9 a.m.-9 p.m.

Interactive exhibit celebrating Minnesota's craft brewing industry. Flights from approximately 100 breweries for purchase.

From Barrel to Bottle	12:30 p.m.
The Latest in Brewing Technologies	2:30 p.m.

MINNESOTA DEPT. OF AGRICULTURE 9 a.m.-9 p.m.

Kids' Agriculture Activities	9-11 a.m.
------------------------------	-----------

UNIVERSITY OF MINNESOTA CFANS 9 a.m.-9 p.m.

Get Hooked on Gar: A Fresh Look at an Ancient Fish immersive VR video. Get gardening & lawn-care questions answered from experts. Learn about new, sustainable crops from Forever Green researchers.

BARNS & ANIMAL COMPETITION AREAS

Cattle, Sheep Barn (including goats), Christensen Pavilion (swine, sheep and goats): 8 a.m. to 8 p.m. Poultry Barn (including rabbits): noon to 8 p.m. Horse Barn (and llamas): 8 a.m. to 9 p.m. Llamas and alpacas are in Compeer Arena 8 a.m.-2 p.m.

CAMBRIA KITCHEN

Minnesota Turkey Growers	10 a.m.-5 p.m.
Cooking Demonstrations	10 a.m., noon, 2, 4 p.m.

DAIRY BUILDING 9 a.m.-9 p.m.

Dairy treats, outdoor gear, agricultural products and educational exhibits.



Butter Sculptures: A long-standing tradition, Princess Kay of the Milky Way and her court get carved out of butter! 9 a.m.-5 p.m.

DAN PATCH PARK 8 a.m.-5 p.m.

On the Dan Patch Park stage, MPR News, Classical MPR and 89.3 The Current team up for live performances, local music and more throughout the day. Presented by Minnesota Public Radio.



Radio Heartland presents Twins of Franklin	10:30 a.m.
YourClassical MPR presents Minnesota Wind Orchestra	1:30 p.m.
The Current presents Nur-D	4 p.m.

DEPT. OF NATURAL RESOURCES 9 a.m.-9 p.m.

Showcasing the Minnesota outdoors! Learn about fire prevention, conservation, visit the fish pond and more.

DNR FISH POND

Fish Pond Talks: Learn about 45 species	9:45, 10:45, 11:45 a.m., 12:45, 1:45, 2:45, 3:45 p.m.
---	---

DNR VOLUNTEER OUTDOOR STAGE

Potluck String Band	10 a.m., noon, 2, 4 p.m.
DNR Commissioner's Youth Conservation Awards	11 a.m.
Eagle Cam Talk	1 p.m.

DNR GARDEN STAGE

Animals of the Mississippi	noon,* 2 p.m.
----------------------------	---------------

DNR PARK

Invasive Carp Information Table	8 a.m.-4 p.m.
Climb the DNR Fire Tower (weather permitting)	9 a.m.-7 p.m.
"Ask a DNR Expert" Information Booth	9 a.m.-7:30 p.m.

ECO EXPERIENCE 9 a.m.-9 p.m.

Reduce-reuse-recycle how-tos, healthy cooking demos, giant monarch butterfly and "bagnado," electric bikes and so much more!



SUSTAINABILITY STAGE (inside)

Solar 101 & How the IRA Affects the Homeowner	10 a.m., 2 p.m.
Renewing the Countryside Cooking Demonstration	11 a.m., 1, 3 p.m.
Cool Trash, Precious Plastic & the Future of Sustainable Materials	noon

EDUCATION BUILDING 9 a.m.-9 p.m.

Education/health institutions offer info, freebies. K-12 comp. displays.

High School Robotics Demonstration	10 a.m., noon, 3 p.m.
------------------------------------	-----------------------

COSGROVE STAGE (outside)

Community groups perform daily.

Larkin Dance Studio	10, 11 a.m., noon
Art of Dance Studio	1, 2:30 p.m.
Line Dance Minnesota	3:30, 4:30, 5:30 p.m.



SPECIAL EXHIBITS & ATTRACTIONS

Cats & Dogs The Exhibition: An interactive educational exhibit all about our furry best friends! (North End Event Center) 9 a.m.-9 p.m.

Giant Sing Along: Sing in a field of microphones – karaoke-style! (North of Lee Ave. between Underwood & Cooper sts.) 9 a.m.-8 p.m.

Health Fair 11: Free or low-cost health checks & more. (At Dan Patch Ave. & Cooper St.) 9 a.m.-9 p.m.

History & Heritage Center: Showcasing the stories and traditions that have been the heart of the fair for 160+ years. (Located at West End Market) 9 a.m.-9 p.m.

History Walking Tour: Learn fun facts on this self-guided tour through the fairgrounds. Presented by the Minnesota State Fair Foundation and Minnesota Historical Society 9 a.m.-9 p.m.

Home Improvement Building: Products & services for do-it-yourselfers or those hiring a contractor. (On Cosgrove St., north of Dan Patch Ave.) 9 a.m.-9 p.m.



Joyful World Mural Park: Featuring large-scale artworks painted live by Minnesota artists each day of the fair. Produced in partnership with Forecast Public Art. (South of the Grandstand, east of Grandstand Ramp) 9 a.m.-9 p.m.

Minnesota State Fair Foundation: Friends of the Fair get great perks AND support the State Fair's future. (Tent outside the J.V. Bailey House on Cosgrove St.) 8 a.m.-8 p.m.

Welcome Wall: Take a selfie in front of this new double-sided art installation recognizing fair supporters. (North of Loop Gate #9, just south of Judson Ave.) 9 a.m.-9 p.m.

Old Iron Show: Demos and displays of rare antique farm equipment. (On Lee Ave. between Underwood & Cooper streets) 8 a.m.-7 p.m.

Sensory-Friendly Spaces: 9 a.m.-9 p.m.

Fraser Sensory Building: For guests with sensory sensitivities. (West side of Cosgrove St., south of the Home Improvement Building)

Joy Mobile: New! (North of Loop Gate #9, just south of Judson Ave.)

University of Minnesota: Visit the new U of M exhibit! (Dan Patch Ave. & Underwood St.) 9 a.m.-9 p.m.

University of Minnesota Driven to Discover: Participate in a study, meet researchers and learn about fascinating work. (West side of Cosgrove St., across from Education Building) 9 a.m.-9 p.m.

SPONSOR BOOTHS

August Schell Brewing Co.: Schell's & Grain Belt beer. Frozen beer toppings, sours & more. (Next to the Schell's Stage)

Bremer Bank: Free photo op, giveaways and seating at the Bremer Grain Bin. (On Judson Ave., south of the Ag-Hort Building)

Cal Spas: Promotion & sales of Cal Spas products, including hot tubs, swim spas and gazebos. (Underwood St., south of Ramberg Center)

Good Health Saunas: Promotion and sales of Good Health Saunas. (On Randall Ave., south of The North Woods)

Green Mill Restaurant: Enjoy award-winning Green Mill Pizza and the popular Cheese Curd Stuffed Pizza Pretzel. (Cooper St., west of Family Fair Stage)

Human Touch: Sales of Human Touch zero gravity lounge/office chairs and massage therapy chairs. (Wright Ave. & Cooper St.)

Kemps: Learn what new Kemps products are coming to a store near you and enjoy a delicious sample! (On the corner of Wright Ave. & Underwood St.)

LeafFilter: Promotion and display of LeafFilter Gutter Protection.

EquiMania!™: Interactive equine education (Horse Barn) 9 a.m.-7 p.m.	
FFA Safe Tractor Operators' Contest (West of Compeer) 3:30 p.m.	
Goats: Open Class Dairy Goats (Sheep Barn) 4, 6, 7, 8:15 p.m.	
Horses: The Minnesota State Fair Horse show is FREE with fair admission!	
Western Pleasure, Signature Classes, Miniature Driving and Walking Horses (Warner Coliseum) 8 a.m., 12:30 p.m.	
Pinto and Paint horses, Youth Western Pleasure Speed Events (Warner Coliseum) 6 p.m.	
Llamas & Alpacas: 4-H Llama-Alpaca Showmanship (Compeer Arena) 8 a.m.	
Llama Open Class Showmanship and Halter (Compeer Arena) 10 a.m.	
4-H Llama-Alpaca Closing Ceremony 1:30 p.m.	
GOAT BOOTH: Displays & Activities (Sheep & Poultry Barn) noon-8 p.m.	
MOO BOOTH: Cow milking, fun & educational activities, beef and dairy cattle showcase (Cattle Barn) 9 a.m.-8 p.m.	
BARN STAGE (inside Cattle Barn)	
Video Presentations 9, 10 a.m., noon, 1:30, 2, 6, 7 p.m.	
Moo Live: Presentations & interactive activities 11 a.m., 3, 4 p.m.	
AgDay365 Quiz Show 12:30 p.m.	
Moo Quiz Show 5:30 p.m.	
MOO STAGE (outside Cattle Barn)	
Make It Better With Butter 10 a.m.	
Milking Demonstrations 10 a.m., noon, 2, 4, 6 p.m.	
Cottage Cheese & Yogurt Eating Contest 10:30 a.m.	
Hand Milking 11:30 a.m., 1:30 p.m.	
Talk to the Animals Show 12:20 p.m.	
More Cheese Please 4 p.m.	
Butter Carve-O-Rama 4:30 p.m.	
OINK BOOTH: Displays & activities (Christensen Pav.) 8 a.m.-8 p.m.	
CHS MIRACLE OF BIRTH CENTER 9 a.m.-9 p.m.	
See baby farm animals and learn about modern agriculture.	
CHRISTENSEN FARMS STAGE (outside)	T Mobile
Meet the Miracles: MOBC Animals Up Close 10 a.m.	
Thank a Farmer Magic Show 11 a.m., 1*, 3 p.m.	
Meet the Farmers: Pigs and Pork noon	
LIVE: Tour a Pig Farm 2 p.m.	
Natural Resources Conservation Service 4, 6 p.m.	
FFA Champions of the Day 5 p.m.	
CREATIVE ACTIVITIES BUILDING 9 a.m.-9 p.m.	
See featured exhibits, creative activities entries, cooking demonstrations, shopping in the annex and more!	
Recipe Card Roundup 10 a.m., 4 p.m.	
Demonstrating Today: Weavers Guild of MN, Paper Marbling and Bookbinding, Potekglass 9 a.m.-7 p.m.	

FAMILY FAIR AT BALDWIN PARK 9 a.m.-9 p.m.

Families are first at Family Fair at Baldwin Park with music, activities and concessions for the kid in all of us!

Alphabet Forest: Pose for photos with fair letters, make crafts, take a book break and more! 9 a.m.-8 p.m.

Meet Blue Ribbon Author & Illustrator Colleen Muske 10 a.m.-2 p.m.

Math On-A-Stick: A space for kids and families to explore math concepts. Discover the creativity of math! 9 a.m.-8 p.m.

Visiting Mathematician: Barry Cipra 10 a.m.-2 p.m.

FAN CENTRAL 9 a.m.-9 p.m.

Games and displays highlighting Minnesota's hometown sports teams. Meet players and purchase team merchandise.



FINE ARTS CENTER 9 a.m.-9 p.m.

Visit Minnesota's largest juried art exhibition showcasing more than 300 of the finest pieces of artwork selected from thousands entered by artists throughout the state.

Studio: HERE: Watch art being made as artists use the Fine Arts Center gallery space as their studio-away-from-studio for the day! Supported by the Minnesota State Fair Foundation

Artist: Areca Roe 9 a.m.-8:15 p.m.

Be a Fine Arts Detective: A fun sleuthing activity for all ages.

GRANDSTAND 9 a.m.-9 p.m.

The historic Grandstand features two levels of shopping at 200 vendors, including boutique-style merchants in the Veranda (upstairs).



KEMPS LITTLE FARM HANDS 8 a.m.-7 p.m.

Little farm hands can ride a tractor, milk a cow, learn about pollinators, soil and more at this pint-size mock farm exhibit for ages 3-10. Ag-Vestigator activity for junior farm hands.



PET PAVILIONS 9 a.m.-9 p.m.

Meet the Dog Breeds: German Shepherd, French Bulldog (half day), Twin Cities Airedale Club, Anoka County Kennel Club

Pet Surgery: Performed by Minnesota Veterinary Medical Association members 10 a.m., noon*, 2, 4 p.m.

DEMONSTRATION AREA

Minnesota Dog Breeders Association 9, 11 a.m., 1, 3, 5 p.m.

RIDES & GAMES (** Closing times may vary)

Adventure Park: Have a blast with some of the fair's most challenging adventures and extreme attractions! 9 a.m.-11 p.m.**

Kidway: Carnival attractions for little tykes! **KWIK TRIP** 9 a.m.-10 p.m.**

Mighty Midway: Fun rides, games & concessions! Featuring the new rides Kracken and Defender! 10 a.m.-11 p.m.**

LeafFilter: Promotion and display of LeafFilter Gutter Protection. (West side of Cosgrove St. at Home Improvement Bldg. entrance)

Mattress Firm: Promotion and sale of mattresses, bases and frames. (On the corner of Randall Ave. & Cooper St.)

Mazda: Promotion & display of Mazda vehicles, plus product insights & giveaways. (At the west Grandstand Plaza)

Minnesota Lottery: Lottery tickets, beneficiary info., free gift with purchase. Second chance drawings. (NW corner of Judson & Nelson)

Minnesota Rusco: Promotion and sales of Rusco brand home improvement products. (In the Grandstand, lower level, east side)

Paddle North: Promotion and sales of paddle boards, kayaks and apparel. (In the Dairy Building, northeast corner)

Samsung: Stop by to shop the latest Samsung offers and innovations. (On Cooper Street, south of the Great Big Wheel.)

Sleep Number: Shop smart beds, adjustable bases, pillows, bedding and more. (Grandstand, lower level, southeast corner)

State Farm: Build your very own free personalized bobblehead. (East side of Cooper St., outside J.V. Bailey House)

Sun Country: Promotion of Sun Country Airlines card member services and giveaways. (On Dan Patch Ave., south of the SkyGlider.)

Summit Brewing Co.: Summit beers, including new, exclusive fair beer, served at Summit on a Stick. (Inside the International Bazaar entrance)

T-Mobile: Learn how you can score the best deal in wireless and home internet. (On the corner of Judson Ave. and Clough St.)

Treasure Island: Stop by the Treasure Island exhibit to win some fun prizes. (On Dan Patch Ave., north of The Garden)

UnitedHealthcare: Rest your feet & get your Medicare questions answered! (Dan Patch Ave. between Cosgrove & Cooper Sts.)

Xcel Energy: Visit the Xcel Energy Tiny House and participate in the new digital scavenger hunt by scanning the QR codes for a chance to win a prize and learn about saving energy! (Eco Experience)

Xfinity: Demo and sales of Xfinity services. Free fun photo op. Free Wi-Fi. (On Underwood St., east of FAN Central)

TOURING PROMOTIONAL EXHIBITS

American Red Cross: Collecting blood donations; information on the importance of giving blood. (Northeast side of the Ag-Hort Bldg.)

BUBBL'R: Stop by to enjoy a free 2-ounce sample of BUBBL'R and an interactive photo opportunity. (Northeast side of Ag-Hort Bldg.)

Idahoan Mash-A-Bowl Tour: Stop by to grab a free sample of Idahoan Food On-The-Go Cups. (On the corner of Wright Ave. & Cooper St.)

Red Bull Showrun - F1 Car: Free photo op with the Red Bull Showrun F1 Car! (On Wright Ave. between Underwood & Cooper streets)

Saputo Black Creek Cabin: Stop by the Saputo Black Creek Cabin for free cheese samples and giveaways. (On Wright Ave. between Underwood & Cooper streets)

VISITORS PLAZA

Meet State Fair mascots Fairborne and Fairchild! 11 a.m., 4 p.m.

